

MUJIE 慕杰®

YOUR AUTOMATION, YOUR MUJIE!

适用于多种用途，产品性能与品质良好
金属外壳，便于安装保护，适用于远距离检测

方形对射光电传感器MJK系列 Square photoelectric sensor MJK series

It is suitable for a variety of purposes. The metal shell with good product performance and quality is easy to install and protect. It is suitable for long-distance detection



► 型号说明 Model Explanation

M	JK	-5	T	M	K	-Z	-□	-□
基本型号 Model M:型号代码 Model code M□: 特殊型号定义 Special definition	传感器类别: JK:方形光电 Rectangular photoelectric sensor	检测距离 Sensing distance : 5:5m 10:10m	检测方式 Sensing method : D:漫反射 Diffuser-reflective R:回归反射 Retro- Reflective with MSR function T:对射 Throughbeam	输出方式 Output configuration : M:继电器输出 Relay	输出状态 Operation mode: K:常开 NO B:常闭 NC KB:常开+常闭 NO+NC	产品等级 Product grade: Z:Z级	线缆长度 Cable length (标配2米 Standard Cable length is 2m) 5 : 5m	客户定制 Customized informat

► 产品种类 Product Category

型号 Model	形状 Appearance	检测距离 Sensing distance	输出规格 Output configuration	动作状态 Operation mode	连接方式 Connection mode
MJK-5TMK-Z		5m	M:继电器输出 Relay N:NPN输出 DC 3-wire, NPN P:PNP输出 DC 3-wire, PNP A:交流两线输出 AC 2-wire	K:常开 NO B:常闭 NC KB:常开+常闭 NO+NC	导线引出 Cable line

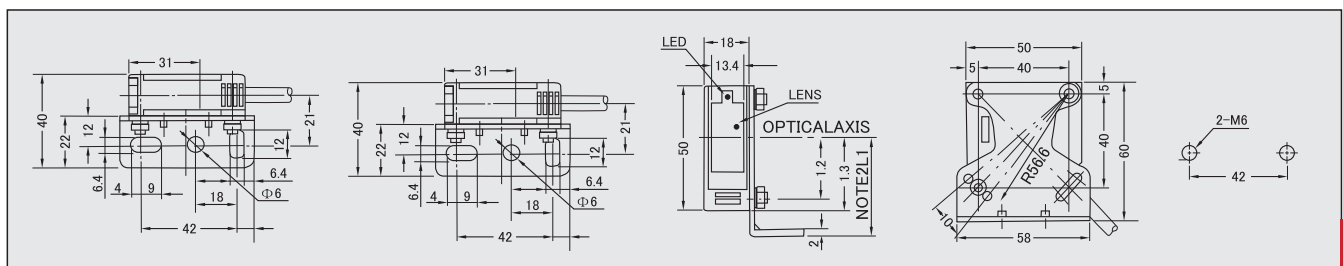
► 技术规格 Specification

型号 Type	MJK-5 TM	MJK-5 TM2
电源电压 Voltage	交直流:12-240V	
检测距离 Sensing distance	5m	
光源 Light source	红外发光二极管 Infrared LED	
动作模式 Operation mode	入光时 ON Light-ON	遮光时 ON Dark-ON
消耗电流 Leakage current	DC/AC 3W max.	
响应时间 Response time	30ms max.	
输出/电源指示 Output/Power indication	- / 红色 LED Red LED	
回路保护 Protection circuits	电源逆向保护, 输出短路保护 Power supply reverse polarity, Output short-circuit protection	
环境照度 Ambient illumination	白炽灯 Incandescent lamp:3000lx	
环境温度 Ambient temperature	-25~+55°C(不结冰 with no icing)	
环境湿度 Ambient humidity	工作时/保存时 Operating 35~85%RH/Storage:35~95%RH(不结露 with no condensation)	
绝缘电阻 Insulation resistance	20MΩ max. (DC500V) 充电部总体与外壳间 Between current -carrying parts and case	
耐电压 Dielectric strength	AC1500V max. 50~60Hz 1min 充电部总体与外壳间 Between current -carrying parts and case	
重复精度 Repeat precision	< 5%	
负载电流 Load current	< 1A	
压降 Drop	< 0.5V	
振动(耐久) Vibration resistance	10~55Hz 复振幅 1.5mm X, Y, Z各方向 2h double amplitude for 2 hours each in X, Y and Z directions	
冲击(耐久) Shock resistance	500m/s ² X, Y, Z各方向 10次 500m/s ² 10 times each X, Y and Z directions	
防护等级 Degree of protection	IEC IP64	
材质 Material(外壳 Case / 透镜 Lens)	丙烯酸树脂 Methacrylic	

► 电路输出方式(示例) Example for output circuit

继电器输出 Relay DC 5-wire	继电器输出 Relay AC 5-wire	继电器输出 Relay DC+AC 5-wire

► 安装尺寸图 Mounting Dimensions(单位 Unit:mm)



编码器/磁栅尺
Encoder/Magnetic Scale

位移/倾角/计数器
Displacement /Inclination /Counter

接近/加速度/温度
Proximity/Acceleration/Temperature

光电/超声波/区域
Photoelectric/Ultrasonic/Area

压力/称重
Pressure / load cell

联轴器/附件
Couplings/Accessories